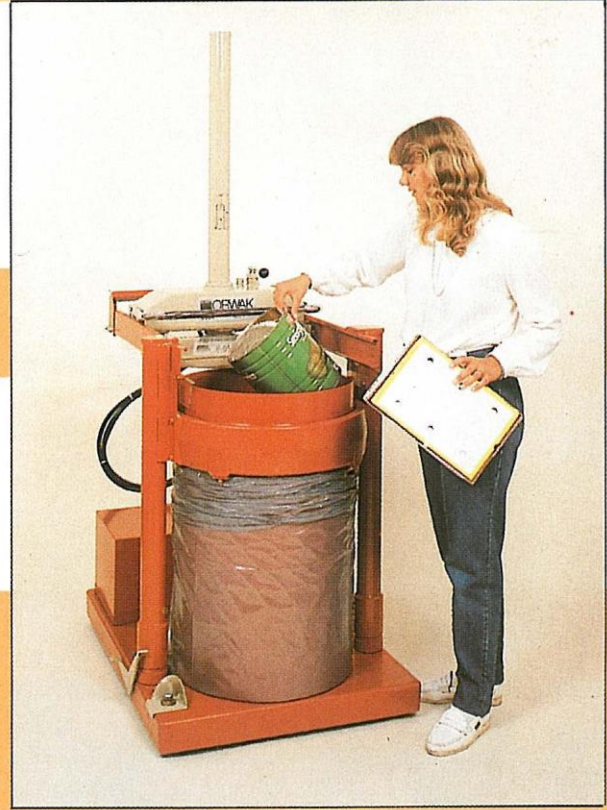


ORWAK COMPACTOR 5030

Refuse packed under pressure without damage to bag.



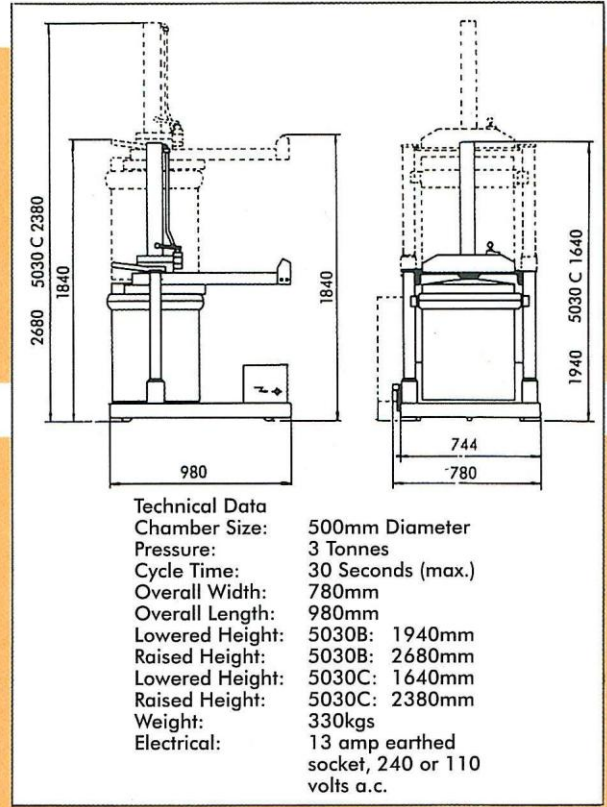
1. A sack is fitted to the drum when raised.



2. Refuse, including tins, paper and wet rubbish, is placed inside the drum.



3. The process is repeated until bag is full, leaving a neat, easy to handle, hygienic pack.



The 5030C is for restricted headroom